

Mozilla: A Users Guide.
or
Using the Mozilla Application Suite

Kevin T. Neely

May 2, 2004

Version 0.2.1

Contents

1	Installation	15
1.1	Deciding which Mozilla to Run	15
1.1.1	Platform	15
1.1.2	Version	15
1.2	Installing Mozilla	16
1.2.1	Using an Installer Package	16
1.2.2	Manual Installation	17
1.3	Upgrading	19
1.3.1	Make a Backup	19
1.3.2	Uninstall	19
1.3.3	Install Mozilla	20
1.3.4	Retrieve Missing Files	20
1.4	Running Multiple versions of Mozilla	21
2	Getting Started and Mozilla Basics	23
2.1	Starting Mozilla	23
2.2	Exiting Mozilla	23
2.3	Profiles	23

2.3.1	Profile Manager	23
2.3.2	QuickLaunch	23
2.4	Preferences	24
2.5	Advanced Settings	24
2.5.1	prefs.js	25
2.5.2	user.js	25
2.5.3	usercontent.css	26
2.6	Profiles	27
2.7	Themes	27
2.8	Security	27
2.8.1	Passwords	27
2.9	Cookies	27
2.9.1	Privacy Settings	28
2.9.2	Cookie Manager	28
2.10	Miscellaneous	33
2.10.1	Ctrl-U	33
3	The Web Client	35
3.1	Preferences	35
3.2	Bookmarks	35
3.2.1	Importing from Another Browser	36
3.2.2	Organizing	36
3.3	Toolbars	37
3.3.1	Component Bar	37
3.4	navigating to websites	37
3.4.1	The Location Bar	37

3.5	Navigating within Websites	37
3.5.1	Finding Keywords in a Website	37
3.5.2	The Site Navigation Bar	39
3.6	Tabbed Browsing	39
3.7	Sidebar	39
3.8	Page Information	39
3.9	Plugins	39
3.10	Working Offline	39
3.11	Advanced Preferences	40
3.11.1	Non-Mozilla Mail interaction	40
4	E-mail and News	41
4.1	Setup	41
4.1.1	Preferences	42
4.1.2	Mail Account Setup	45
4.1.3	Mail & Newsgroup Account Settings	45
4.1.4	POP <i>vs.</i> IMAP	46
4.1.5	SMTP, or, Outgoing Mail Settings	46
4.2	Migrating Mail	47
4.2.1	Migrating Mail and Settings	47
4.2.2	Thunderbird	47
4.2.3	Migrating Mail from Another Client	49
4.3	Starting the Mail client	49
4.3.1	Layout	49
4.4	Reading Mail	50
4.4.1	Attachments	50

4.5	Replying	51
4.6	Composing Mail	52
4.6.1	Plain Text E-mail	52
4.6.2	HTML E-mail	53
4.7	Using Templates	55
4.8	Working Offline	56
4.9	News Client	57
4.9.1	News Account Settings	58
4.9.2	Reading Newsgroup Messages	59
4.10	Views	65
4.11	Rules and Filters	65
4.12	Security	65
4.13	Junk Mail Controls	66
4.13.1	Setting up Junk Mail	67
4.13.2	Training Mozilla	69
4.14	Advanced Mail and News Settings	70
4.14.1	Advanced Appearance Settings	70
4.14.2	Mail	73
4.14.3	News	73
4.15	Troubleshooting	73
4.15.1	Messages Not Sending	73
4.15.2	Mail Files are too Large	73
5	Address Book	75
6	Composer	77

7 ChatZilla	79
8 Security	81
9 JabberZilla	83
10 Under the Hood	85
10.1 UserContent.css	85
A A Sample user.js file	87
B Default Directory Profile Locations	91
C Command-line Options	95
D Resources	99

And the beast shall be made **legion**. Its numbers shall be increased a **thousand thousand** fold. The din of a million keyboards like unto a great **storm** shall cover the earth, and the followers of Mammon shall **tremble**.

from The Book of Mozilla, 3:31¹

(Red Letter Edition)

¹also available from typing `about:mozilla` into the location bar

Introduction

Why create a user's guide for Mozilla?

I have been using Mozilla as my primary web client since about release 0.8 or so, and was always frustrated with the lack of documentation. Granted, I've never looked for or required a book for Internet Explorer, but then again, the internal help for that product is so good, and, primarily, it does not have the wide range of customization available to Mozilla. The idea here is to get you up and running quickly with the basics, and then wow you with features that are easy to configure or add.

Furthermore, this book should be able to be a guide for the Mozilla derivatives out there. Web clients such as Netscape , K-meleonK-Meleon , Camino (formerly Chimera), Phoenix, etc. could be served by the sections which pertain to web browsing. Mail clients like ??????? should be pretty well covered by the Mail and News section. Also, if you are a developer working on one of these projects, it is my hope that you can use this documentation to help out your users. Mozilla could aptly be described as That-from-Which-All-Other-Things-Come as there are so many great projects which have evolved from the Mozilla Project. So, when I say *Mozilla* in this book, what I mean is *Mozilla and all other applications that come from the Moz. Project*

Additionally, at the end of each section, subsection, subsubsection or whatever, I'm

going to try to have an advanced section, or tip, or paragraph. The idea of this book is to showcase Mozilla, what you can do with it, and why you want to use this application. These should be pretty straightforward, and are for you to try out, as they really bring out the power of this Internet client.

My Experience

I am by no means a developer of Mozilla. I am just a user, and I think that you should be one too, which is why I am writing this. I have been using Mozilla for a few years now, and have chosen it over other web clients since late 2001, overcoming incompatibilities as they arose. I believe that Mozilla has really grown into itself and is a viable alternative for anyone that wants to browse the web and use e-mail.

I was drawn to Mozilla not because it is faster, cooler, or open source (although it is at least two of those, if not three), but because I can do things with this browser that cannot be done with other web clients. This is the design of this book: an *user's guide for users*, and it is my aim to aid my fair reader through the differences of this web browser, and to open possibilities for you.

Many of my examples and experience come from running Mozilla on a Windows platform. Although I am not in any sort of minority, I realize that most of the people that run this program are staunch haters of Microsoft. I am not, by any means; I just like the options and convenience Mozilla provides me through its innovation and creativity.

Audience

This is book for the everyday user of Mozilla. It is aimed toward the people that are looking for an alternative to other web suites, like the idea of Mozilla, but need a leg-up with starting to use this very complex and robust application.

What Should You Read?

If you've never used e-mail or the web before, I'd like to know what made you go out and choose Mozilla. (wise decision, by the way!) Seriously, if you have no existinng e-mail, addressbook, and/or bookmark data, I'd recommend that you just read through the book with Mozilla in front of you, configuring the application as you read

If you do have, say, Outlook, runnng on your computer and want to migrate to Mozilla, I'd recommend that you go through the setting up and basics chapters, ?? and [Chapter 2](#), and then the configuration and migration portions of the main components, like bookmarks (??), mail ([section 4.2](#)), and addressbook (??). After importing as much of your old settings and information as you can, then go back and look at the sections on using the Mozilla suite of applications.

Conventions used in this Book

- I will list specific things like menu items in *italics*, and with arrows to separate a menu item from its choices, and from further choices, if applicable. For example, if you wanted to pull up a new browser window, which is an item under *new*, which is under *File*, I would write it like this: *File—New—New Navigator Window*.
- If I want you to type something, I'll put it in a fixed width font, like this: Now type

`alt-F4` to exit Mozilla. In that context, words like ‘ctrl,’ ‘alt,’ and ‘ins’ mean to type that key, not those specific letters.

- Notes and Tech Notes: A Note is something everyone will want to read. A TechNote will be something that explains the Technology underlying a feature and is probably not interesting to the casual user.

Tools Used

This is also sort of a thank you section, as I don’t think this book would have been possible without all the people making this great software that I used to create *Mozilla: A User’s Guide*. Wherever possible, I used open source software. Obviously, I very much believe in the Open Source movement and it is my hope that non-coders like myself (and hopefully you) will support Open projects just by using them.

First and foremost, \LaTeX was used for the look and layout. Information on \TeX and \LaTeX can be found at [. For an editor, I used good ’ole Emacs](#), for which a lot of people give me crap, but I think is a perfectly good editor, as it does what I want it to. Thanks also to —insert name here—’s color-themes for emacs, which made the screen prettier to look at while I was slaving away at this book. I also used Microsoft’s Windows XP as my Operating System. I do run Mozilla on UNIX platforms, but my primary platform is Windows-based. Though not Open Source, XP is a solid platform, and, really, I am writing this for those of you that are running Windows (and—to a lesser extent—Mac users), as Linux and UNIX users have already decided what they like and were not provided with a default browser, but instead chose one on their own recognisance.

License

This work is licensed under the Creative Commons Attribution-ShareAlike License. To view a copy of this license, visit <http://creativecommons.org/licenses/by-sa/1.0/> or send a letter to Creative Commons,

559 Nathan Abbott Way,
Stanford, California 94305
USA.

Thanks and Acknowledgements

For now, thanks go to Caltrain and my commute for providing me with two and a half hours per day of idle time, some of which I use to work on this book.

Chapter 1

Installation

1.1 Deciding which Mozilla to Run

1.1.1 Platform

Before we can do anything, we need to think about what type of computer we are running. First, are we running Windows or Linux?¹

1.1.2 Version

One of the things that makes Mozilla great is its accelerated development rate. Unfortunately, this makes it a bit confusing for new users when deciding which version to download and install, especially since the good folks at mozilla.org want you to try the very latest version (regardless of stability) and place it right there on the top of the list.

When installing Mozilla for the first time, you should go for a stable release. These are

¹Mozilla will run on other platforms than these, OS/2 and Macintosh being two of them. At this time, You are are your own for the installation, but all the other sections should apply to you.

available right off the <http://www.mozilla.org/releases/> page. Look for a full, non-interim release. Keep scrolling down until you find a release that does not end in an ‘a’ or ‘b.’² As of writing, the current official release is 1.0.2. The current stable release is 1.2.1, and that’s the one I would recommend and will be using for most of my examples.

1.2 Installing Mozilla

“Okay,” you say, “I’ve got the numbering scheme worked out, but what the hell are all of these options?” Well, Mozilla, in its ongoing efforts to provide as many choices as possible, has created different install packages for you to choose from.

1.2.1 Using an Installer Package

Windows If you are a first-time user, you should go ahead and pick the Full Installer, download it to your hard drive, and then double-click on that file.

This launches the familiar windows setup-type screen I’m sure you’ve seen time and again. Here we go!

1. Click Next.
2. Here’s the Mozilla Public License, click Accept, unless you have something against good, free software.
3. Now select your poison. The default install directory of `c:\Program Files\mozilla.org\mozilla` should be fine, but you may want to change it a bit if you think you might install multiple versions. See section 1.4 for details.

²These letters denote interim test builds and should not be used for everyday web surfing, unless, of course, *danger* is your middle name.

4. If you went with the complete install (recommended) you can choose the quicklaunch icon. This is useful if you are using a laptop or something where you launch mozilla often. If you reboot often, but open Mozilla rarely, this may not be a good option for you, since it will take a bit longer to log on to your machine. See [subsection 2.3.2](#) for more information on this feature.
5. The Custom install allows you to choose the components you want. You most likely do not need the Debugger or the Inspector, and maybe you do not want the feedback agent. However, I highly recommend the feedback agent as it does not pose a risk to your privacy, and will help to improve the product for you, since it will report on problems you come across.

Net Installer Using this is just as the above, but it downloads the files as it installs, rather than downloading the entire package at once. The only different option here is whether you want to save the install files locally. This is handy if you want to re-run the install in the future, or perform the install on multiple computers.

Linux

1.2.2 Manual Installation

Manually installing Mozilla is almost as easy as using the install package. You will want to use this method for a few different scenarios:

- you like to have full control over the install process
- you are installing multiple versions on a single machine
- you are installing the same version on multiple machines

- you want to install a nightly build
- you want to automate the installation of mozilla

To manually install Mozilla on win32, you merely need to download either the mozilla-win32-x.x.zip or mozilla-win32-x.x-talkback.zip file from the mozilla.org site. Once you have downloaded the file, use a program to unzip³ it to the directory of your choice. Once it is there, double-click on the mozilla.exe file and you are up and running, it's that easy! For future convenience, you may want to drag the mozilla icon to either your desktop or your quickstart bar.

One drawback from installing manually on Windows is that registry entries do not get created. This will not affect the working of Mozilla, but it will make it more difficult to install some plugins like Shockwave. To add these entries so the installer can find Mozilla's plugin directory, follow these few steps.

Tip: Before performing an upgrade, be smart like Poindexter and not dumb like Blutto; perform a backup of your Mozilla installation!!

It's easy, in Windows, simply go to your Mozilla directory, and hit `ctrl-c` and then `ctrl-v` to quickly make a backup. If something goes wrong, simply delete the original and rename the "Copy of Mozilla" folder to just "Mozilla".

Under Linux, change to the directory under which Mozilla is installed (usually `/usr/lib` or `/usr/bin`) and run `cp -r mozilla/* /tmp`. If something goes wrong, simply delete mozilla `rm -rf mozilla/` and copy the files back `cp -r /tmp/mozilla/* ./`.

³This can be whatever program you want to use. A popular, although commercial, product is WinZip. Another product that is free is 7-zip

Macintosh OS X Installation on the Macintosh is simple. You need merely download the file, and drop it in the proper folder, say, Applications.

1.3 Upgrading

Upgrading Mozilla is similar to doing an install. The key here is to keep as much of your old configuration and data as possible. Luckily, Mozilla keeps all your configuration data and data in your profile directory, so the risk of losing data is slim to none.

Before proceeding, make sure you have downloaded the new version to which you want to upgrade and fully close Mozilla. If you use quicklaunch⁴ in Windows, then you need to go to the taskbar, rt. click on the Mozilla icon, and choose *Exit Mozilla*.

1.3.1 Make a Backup

The profile directory is located in a different location, depending on your Operating System, see [Appendix B](#) for the default location. The only thing an upgrade is going to touch are the actual binary and library files in the location you specified for Mozilla to originally be installed. Navigate there and make a backup as on page [18](#) above.

1.3.2 Uninstall

If you are running Mozilla on Windows, and used an installer to install Mozilla, as in [subsection 1.2.1](#), it is best that you uninstall before you perform another install. In Windows, use the *Add/Remove programs*. If you did a manual install, then just continue, making sure you made a backup of the binaries.

⁴??

It is also good to go and delete the XUL.mfl file from your profile directory. On Linux, this file is called XUL.msfl

Tip: All your mail and news data is stored in subdirectories in your profile location. POP and local mail are stored in *Mail*, mail retrieved via IMAP is stored in *ImapMail*, news is stored in *News*, and address books are in *.mab* files. No matter where you put Mozilla, (or even if you accidentally delete Mozilla) it will be able to find this data for you.

1.3.3 Install Mozilla

Here, just install Mozilla using your favorite method from [section 1.2](#).

1.3.4 Retrieve Missing Files

“*Wait!*” you scream, “didn’t Kevin just say that I wouldn’t lose any data? I just deleted everything!!” Well, you have not lost any data at this point, but you are missing a couple of files.

Plugins You should copy the contents of the *plugins* directory from your backup to the new install. Don’t overwrite newer files, though. This way you will not have to reinstall the Flash player so you can go straight to [and](#) see the newest Strong Bad e-mail.

Themes If your upgrade was incremental, say, from a beta version to the full release, or a Mozilla update like 1.0 to 1.0.2, then your old themes should work with the new version without a problem. Just copy your old *Themes* directory to the new one, again not copying over newer files. See [section 2.7](#) for more info and troubleshooting ideas on themes.

1.4 Running Multiple versions of Mozilla

Using the Manual Install method makes it easy to run multiple versions of Mozilla on your computer. Because Mozilla is being developed so quickly, you can use this to test a new version while keeping your old, trusty version around in case something doesn't jive in the newer version. When running multiple versions, nearly all your settings will carry over from one version to the next, as they are stored in a separate location⁵

Note: Remember that you can only run one instance of Mozilla at a time. If you try to start a different version alongside your currently running Mozilla, it will bring up a new browser window, but the same version. You need to fully exit whatever you are running, and then launch the version of Mozilla you would like to run.

To install multiple versions of Mozilla that can run at the same time, simply go into your mozilla directory and create a new directory named the same as the version number, or whatever identifying mark is meaningful to you, and then proceed to the section for your Operating System.

Windows Now, unzip the new version of Mozilla into its directory, just like in the manual install in section 1.2.2. Don't forget to create a new shortcut for the new executable. Go into the directory and right-click drag the icon to your desktop, start menu, or quick launch bar, and choose *create shortcut here*.

Linux The idea here is the same as in Windows, simply create a new directory wherever you want, but for sanity's sake, I recommend some logical structure near the other install.

⁵See Appendix B on page 91 for more info about the profile directory.

1.4. RUNNING MULTIPLE VERSIONS OF MOZILLA CHAPTER 1. INSTALLATION

Chapter 2

Getting Started and Mozilla Basics

2.1 Starting Mozilla

2.2 Exiting Mozilla

2.3 Profiles

2.3.1 Profile Manager

Use the Profile Manager to configure new and existing Mozilla Profiles.

2.3.2 QuickLaunch

QuickLaunch is a feature available only on Mozilla for Microsoft Windows platforms. What it does is keep a portion of Mozilla in memory, even if you close all the windows. The purpose is to speed up the launch time of Mozilla when you click on the icon. The key thing to remember about QuickLaunch as you read through this and work with Mozilla is

that the only way to exit the application is to close all Mozilla windows, and then right-click on the Mozilla icon in your system tray and choose “Exit Mozilla.” This is necessary anytime you install something like a theme. It is probably best to leave this off while you configure Mozilla and install the components and themes you want to use. Once you have it the way you like, you can find QuickLaunch at *Edit—Preferences—Advanced* and you just check the “Enable QuickLaunch checkbox.

2.4 Preferences

Preferences are your personal settings and customizations in Mozilla. They are used to tailor Mozilla to fit your needs and usage pattern. Because Mozilla has been created by an active and vocal user community, there are many, many preferences, located in many, many locations. First, we will look at the standard preferences offered in the GUI (or Graphical User Interface) dialogues. Then, in [section 2.5](#), we will take a look at some more advanced and perhaps esoteric settings.

2.5 Advanced Settings

This section talks about where Mozilla stores its settings, as well as the more, ahhh, abstruse settings. These settings are used for options that have not made it into the GUI, really esoteric options that are not really meant for public consumption (but are fun to play with anyway), and –in the case of alpha, beta, and nightly versions– options that are in the codebase but still being worked on, so need a specific entry to activate them.

Preferences for Mozilla are stored in the user’s profile directory in files called *prefs.js* and *user.js*. These files can be edited with any text editor. Just make sure that if you use

the schizophrenic notepad provided by Microsoft on the Windows platform that it does not rename the file with a *.txt* extension.

When a change is made to one of these files, the modification will not take effect until Mozilla has been completely shutdown and started back up again, so it can read in the new setting.

2.5.1 `prefs.js`

This file contains all the settings changes you have made in Mozilla. Anything that is not the default value will appear in this file. This file is automatically generated by Mozilla when first run, or when creating a new profile. At the top of the file, it warns you that it is a generated file which means that changes made to the file are in danger of being overwritten. You should always completely exit Mozilla before modifying this file.

A great new feature, available since the beta versions of 1.3 is the ability to type in `about:config` into the location bar in your browser. This will generate a list of **all** the available settings for Mozilla. Ones that have been changed or modified somehow are shown in bold. Any of these settings can be changed simply by double-clicking on the item and entering the desired value in the popup box.

2.5.2 `user.js`

Because the `prefs.js` file is generated and can now be manipulated through the cool `about:config` tool, settings you want to manually insert should be done through the `user.js` file. This file is not created upon install or profile creation, however, the existence of this file in the profile directory upon startup will be noticed by Mozilla and read into the preferences. Settings are read from `user.js` and placed in `prefs.js`, however, simply removing an entry from `user.js` and restarting Mozilla does not mean the entry will disappear

from `prefs.js`. It is best to reverse the setting (for example, changing the *true* setting in `user_pref("dom.disable_open_during_load", true);` to `false` and restarting Mozilla should reverse the behavior of this particular popup window control, whereas merely removing it would have left the entry active in the `prefs.js`.

2.5.3 `userContent.css`

Mozilla has two major components for the user interface, XUL and CSS. XUL blah blah blah. CSS, or Cascading Style Sheets, control the appearance of specific objects, say the text of an e-mail. In fact, themes¹ that you download are actually just a collection of style sheets and images that define the new appearance. You can use the `userContent.css` file to override the values in whatever theme you are using.

Like the `user.js` file, this file is not created in a default installation. To create one, simply open up a text editor as in [subsection 2.5.2](#) and create a file called `userContent.js`. Also, there should be a `userContent-example.css` file that contains some commented-out examples of what this file can do. You may want to simply rename this file and take out the ‘-example’ portion. You may even want to uncomment some of the examples to enable them.

The use of `!important` at the end of a setting, but before the semi-colon places this setting at high importance and tells Mozilla to always use your setting, overriding what the author intended you to see.

As with most configuration changes made directly in a file, you will need to fully restart Mozilla for changes made in `userContent.css` to take effect. For hints on how to further use this file and more examples, check out <http://www.mozilla.org/unix/customizing.html>.

It is also important to remember that when you modify the display of objects through

¹[section 2.7](#)

userContent.css that you are not actually changing the code. If you want all backgrounds to be hot pink, you can do it by using the !important flag, but that does not mean anyone else will see it that way, not even if you copy the link in your browser and send it to a friend.

2.6 Profiles

2.7 Themes

2.8 Security

2.8.1 Passwords

2.9 Cookies

Although this is not about cookies and Sesame Street's Cookie Monster would be sorely disappointed with this next section, I am going to throw in as many cookie comparisons, analogies, and references as I can. You might even find a cookie recipe herein, if you're lucky.

Cookies are small files that are placed on your computer's hard drive in your profile directory, in the file called cookies.txt (I bet you *never* would have guessed that!) By themselves, they are pretty innocuous and can even be helpful, as they let your browser remember certain tedious input like logon and shopping information. However, if you use a workstation that is shared by many people and have no way to secure your profile, then you may want to take some precautions. You may also not want certain websites to remember information about you, and you can control the settings with the Cookie Manager.

When you visit a website, it may ask Mozilla to store some information about you –based on the permissions you’ve allowed– and retrieve it the next time you visit the site or some other section of the site.

Allowing If you’re anything like Limp Bizkit, then you will just set

Third Party Cookies

2.9.1 Privacy Settings

2.9.2 Cookie Manager

To start the Cookie Manager, you open *File—Preferences—Privacy & Security—Cookies* and then click on the “Manage Stored Cookies” button. You will see a box like in [Figure 2.3](#).

Denying access to cookies As you can see from [Figure 2.3](#), I have unwittingly visited a number of sites that then linked to advertisement sites. These particular sites use cookies to keep track of what ads you have seen and sometimes which ones you have clicked on. As these are most likely the all organic, vegan, no sugar, no egg type of cookies that no one really likes, just pretends to, I am going to select one and click the *Remove Cookie* option while the “Don’t allow sites that set removed cookies to set future cookies” option is checked.

As you can now see in [Figure 2.4](#), this particular domain is now restricted from setting cookies no matter what I set my policy settings. You should be very careful about having the “Don’t allow...” option checked and clicking *Remove All Cookies* since there are times when no matter how hard you are dieting, you need to have a cookie to get through the day and keep your sanity.

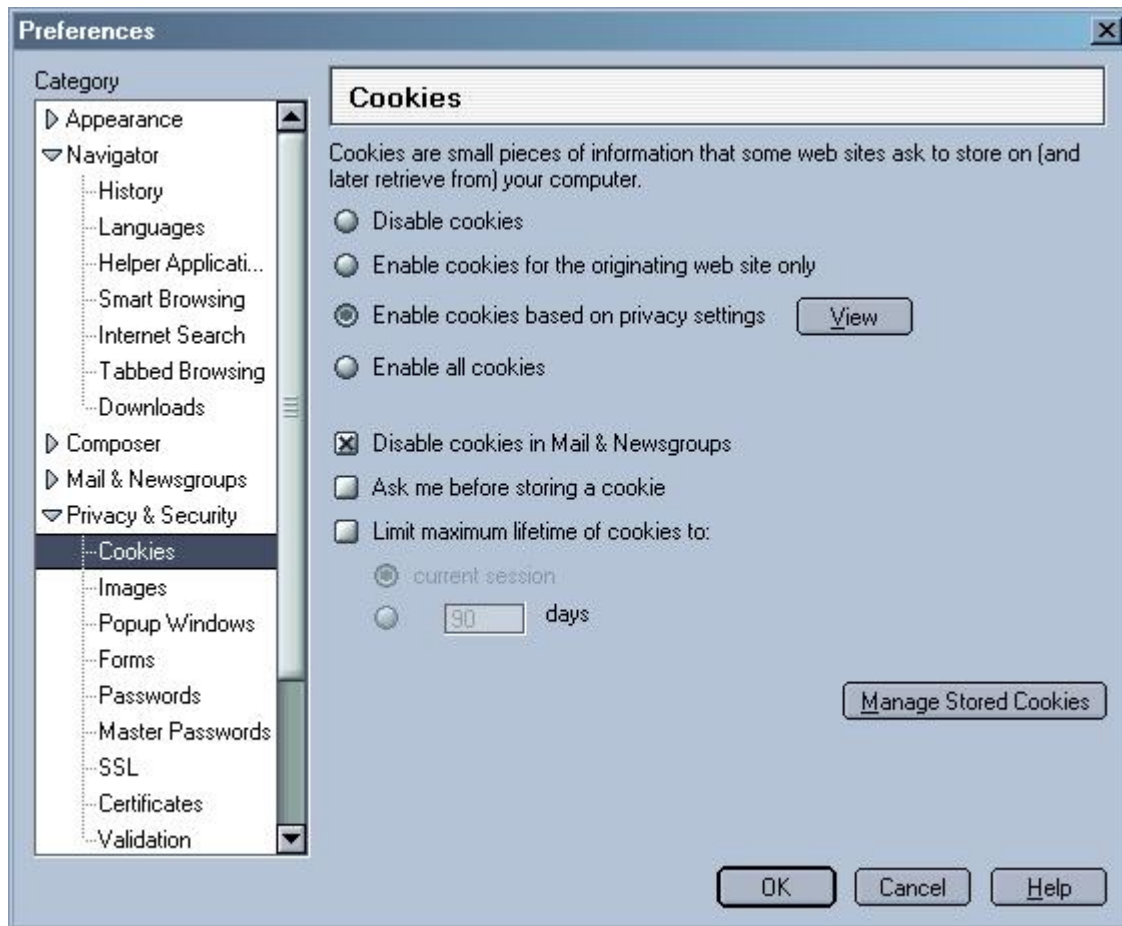


Figure 2.1: Cookie Preferences

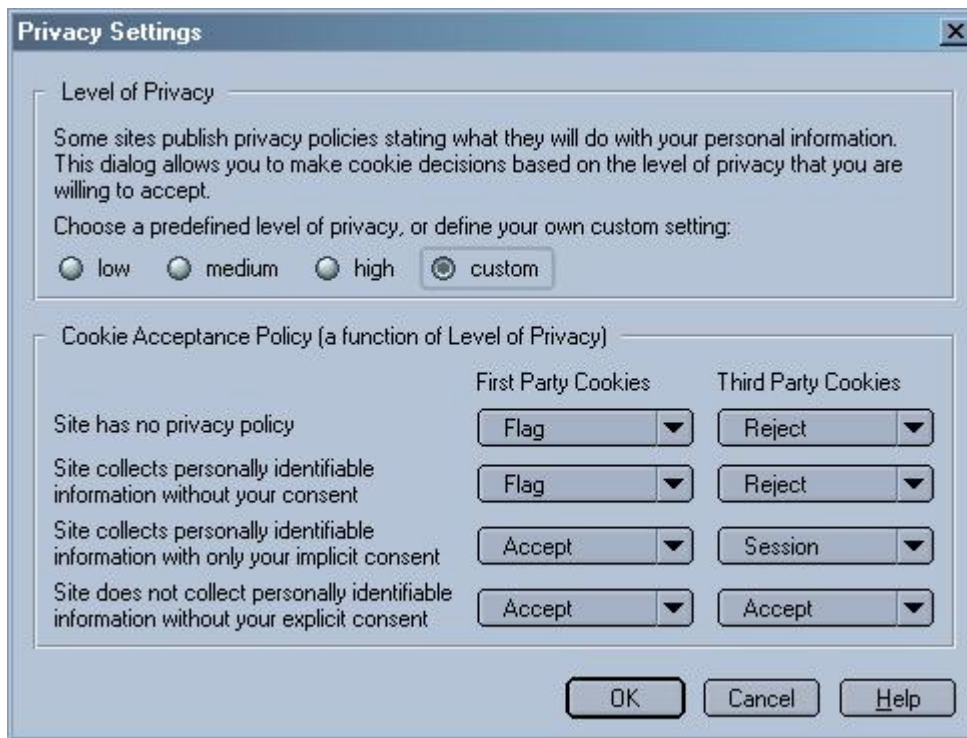


Figure 2.2: Privacy Settings

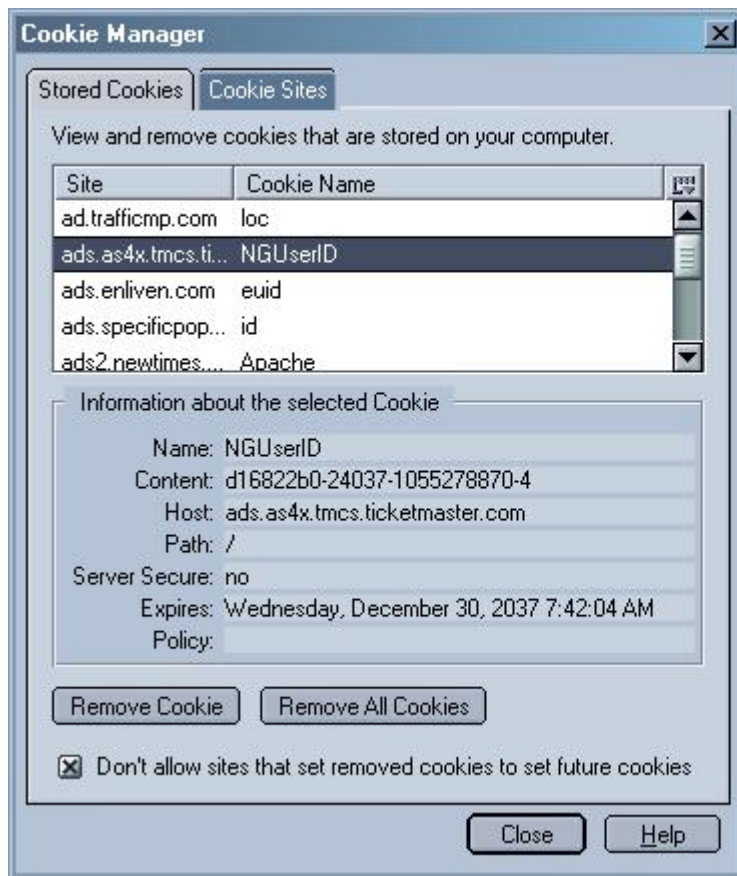


Figure 2.3: Cookie Manager



Figure 2.4: Cookie Sites Tab

2.10 Miscellaneous

2.10.1 Ctrl-U

The `ctrl-u` key combination is your friend! You can use this combination in either navigator or when viewing a message to give you the source of whatever your looking at. In navigator, use of this will give you the sites HTML code so you can view it, learn HTML, or just see what's going on with a website. In mail&news, this will bring up the source of the message, including full headers, which can be helpful in troubleshooting mail problems.

Don't forget about `ctrl-u`, he's your friend and he's lonely!

Chapter 3

The Web Client

Here we are, the main event. Although Mozilla has many features, you are certainly here in part or because of the Web Browser¹

3.1 Preferences

3.2 Bookmarks

It is possible that you may know the names and addresses of all the sites you care about. Plus, once you have visited or typed in a site's name, Mozilla remembers it and requires you to only type a few characters before it can guess where you want to go. So why use bookmarks at all, except for a direct link to that picture of you and your girlfriend on New Year's Eve, or of your Ex throwing up at the toilet?

Well, give bookmarks a chance, because they add some powerful functionality to Mozilla

¹The Component is really called Navigator, but that gets confusing with the old Netscape versions, so I will use web client or browser instead

and just may have a feature for which you are in desperate need (I'm talking something you can't live without here, folks, so read on).

3.2.1 Importing from Another Browser

3.2.2 Organizing

Properties: If you right-click on a bookmark while in the Bookmark Manager, you can choose to view its properties. Herein lies the real power of Mozilla's bookmarks.

Info Here we have the basics. The name is what you see in either the bookmarks drop-down menu, or the sidebar. Location is -surprisingly- the actual web location of the site. Keyword is like a shortcut so you can type it in, only shorter. Hence, *shortcut*.²

Schedule Here's where we get really fancy. You can schedule Mozilla to look at a site every so often for you and notify you when it changes. This way, you don't have to continually go to your best friend Sinbad changes his Weblog concerning the newest Barbie and Ken news only to find out that he still hadn't updated the site since the announcement of the new *Matrix* line of Barbies; Mozilla can tell you when it has been updated.

Notify Here you can decide what action to take when Sinbad's Barbie blog has been updated with the new Prada line of Barbie clothing.

²This is not to be confused with my mother's infamous "cut-shorts" in which she takes a detour in an effort to get to her destination more quickly, only to find herself no closer an hour later

3.3 Toolbars

3.3.1 Component Bar

3.4 navigating to websites

3.4.1 The Location Bar

The location bar at the top of the browser

Location Bar History The Location Bar has its own history. The settings are in *Edit—Preferences—Navigator—History* and here you can set the number of days it remembers, as well as clear it outright, so `http://elmoismyhero.com` doesn't come up and embarrass you when your friend uses your computer to look up the schedule at the Elbo Room and starts typing in `elbo.com`. You know you don't wanna be punk'd like dat!

Location Bar Shortcut To quickly access the location bar, hit `alt+d` or click the mouse cursor in the text field near the top of the browser

3.5 Navigating within Websites

3.5.1 Finding Keywords in a Website

Search engines have become supremely adept at taking you to pages with the sought after information on them. Sometimes, however, you are taken to a page that is –in essence– 40+ pages in length, maintained, obviously, by some nutjob who thinks the internet itself should be nothing but one long page with a hundred million line table of contents.

You don't want to read through this entire site, hell, you don't even want to *skim* through the site, am I right? Have no fear, for with Mozilla, you can do one of two things. If what you are looking for is a link to something else, you can simply start typing on your keyboard, and Mozilla will automatically find the first string that matches what you type in. If what you are searching for is plain text, then you can do the same thing, but you need to preface your typing with a slash (`'/'`) before you type.

So, say you are searching for a radio formerly owned by J.D. Rockefeller, and your search engine takes you to a site that has all kinds of vintage and modern electronics. You know what you want is on there, but it's not easy to find. Simply type `/rockefeller` and you should be taken right there. Well, at least to the first instance of 'rockefeller' on the page. If you need to find more, then type `ctrl+g` or choose *Edit—Find Again* from the menu which will take you to the next instance of rockefeller.

3.5.2 The Site Navigation Bar

3.6 Tabbed Browsing

3.7 Sidebar

3.8 Page Information

3.9 Plugins

3.10 Working Offline

To go offline, you can either click on the connection-state icon in the lower right hand corner, as in [Figure 3.1](#), or you can click on *File—WorkOffline*. This will immediately place you in offline mode, and you will not be able to access the internet.



Figure 3.1: Online/Offline icon

Note: There is no way to take just one component offline, so when any one piece of Mozilla goes offline, the entire application assumes that it cannot reach the internet or local network. You can tell at a glance whether or not you are offline by checking the status of the online status icon in the lower right hand corner, as in [Figure 3.1](#)

3.11 Advanced Preferences

These are options not found in the standard preferences dialogs.

3.11.1 Non-Mozilla Mail interaction

There are other mail clients out there and you may be just craz enough to use one or two of them from time to time. Hopefully, this section can make the interaction of those clients and the Mozilla browser component more amenable.

Outlook Express Clicking Links in OE While reading mail with Outlook Express, you may receive a message that has a web link in it. If you want clicking on that link to open a new Mozilla browser, you need two things

1. Mozilla needs to be your default browser
2. You should put the following setting in your `prefs.js` file:

```
user_pref("advanced.system.supportDDEExec", false);
```


Chapter 4

E-mail and News

So, that fancy ISP you've purchased not only gives you access to view the latest juice on the next *Jason* horror movie, but it also gives you an e-mail address to write to your little sister Eve, –who, even though she resists new technology– cannot be pulled away from her e-mail and Instant Messaging.

Well, one thing at a time. First, let's get e-mail up and running, then later we can look at using Mozilla as an Instant Messaging client.¹

4.1 Setup

There are two different locations to configure the Mail components. The first is in the same place you are already familiar with, the *Preferences* option under the *Edit* menu item. These are the global options for mail, and will propagate to all your individual accounts, unless you specifically override them. Let's go

¹Yeah, this ain't your grandmother's web browser, you can use either the IRC portion of the client(Chapter 7), or the JabberZilla project (Chapter 9).

ahead and take a look at these first.

4.1.1 Preferences

There are some pretty standard options here. As in the other preferences we've looked at, make sure you actually click on the *Mail & Newsgroups* line, as there are some important options here. Most things you can leave default, but I am going to touch on a couple things, pretty much in the order you would come across them, if you started at the top of the options and looked at them in a downward fashion.

- **Windows:** This determines the layout of your Mail & News window. If you change this, you will need to restart² Mozilla. The cute little examples Mozilla provides ought to give you a pretty decent idea what this setting does; see ?? for the skinny on this more-useful-than-you-might-imagine option.
- **Notifications:** You can have Mozilla play any kind of sound you want, but the better feature is the alert or *toast* option. This displays a small pop-up window in the lower right-hand corner saying you have new messages. You can click on this to take you directly to the inbox that has received the new mail.
- **Composition:** Some of the defaults here might be a little different from what you are accustomed to. You may like the newer options, or you may want to change them to what I think are more “natural” settings.

²??

1. Forward messages inline allows you to immediately see and edit what you are forwarding. Otherwise, the forward is an attachment that your recipients must open separately.
 2. Replying makes the most sense when you start the reply above the text, and that the reply is quoted. This way, your reply makes sense to the original sender in case he has forgotten what you sent.
- Addressing: Mozilla makes for easy address collection. Whenever you respond to an e-mail, Mozilla can add addresses automatically, if you have selected “Automatic Address Collection,” and then you can select to which address book you would like them added.

If you or your company has an LDAP directory (this is likely if your company uses exchange servers) you can setup Mozilla to query that server for address lookups. You may need to contact your administrator for some of the parameters. You will need to know the name of a server and your Base DN. It is likely that the servername is the same as your mail server –if you are using Exchange– and the DN very well by your domainname, so you would enter `dc=mycompany;dc=com` if your e-mail were `joebow@mycompany.com`. The port number for LDAP lookups is usually 389.

Much more on addressing can be found in the chapter on the Address Book component, [Chapter 5](#).

- Offline & Disk Space:

Offline At the bottom of the preferences list, you will find this oft-overlooked option. Here, you can specify some Offline/Online options, and how much of your hard disk space Mozilla uses. If composing mail while offline (probably if you travel with a laptop), you will want Mozilla to send mail automatically when you go online. If you have a reason to put Mozilla in its online state when not connected to the network, you will want Mozilla to prompt you or not send unsent messages at all. If you choose this option, you need to remember to manually send the mail by choosing *File—Offline—Download/Sync now* and checking the option to send unsent messages. You can also control Mozilla’s behavior when you choose to go offline.

Disk Space Check this box if you want Mozilla to automatically handle compaction of your folders. Compaction is the process by which Mozilla purges deleted messages. No matter what you choose in Server Settings in [subsection 4.1.3](#), Mozilla will not actually delete your mail when you tell it to. Instead, it hides the mail from you. During compaction, Mozilla will completely remove, or *expunge*, the messages marked for death.

Tech Note: Your mail that is stored in the “Local Folders” account, downloaded via POP, or set for offline use in IMAP is stored in files in your profile³ directory. These files are in a folder named after the account, and then in files named for the mail folder. All the messages in one mail folder are contained in a single file.

³see [Appendix B](#) for the location

4.1.2 Mail Account Setup

Starting mail for the first time⁴ or choosing to add an account⁵ in *Mail & Newsgroup Account Settings* will bring up the account wizard. It is important to note that if you do not have an e-mail account, this will not create one for you. This wizard is to configure Mozilla to read mail from a pre-existing account. Usually, your ISP will provide you with an account. They should have some sort of rudimentary documentation with the answers to some of the questions.

1. **Your Name:** something like *Snoop-kateer* would be good here. Your usual name would work, as well.
2. **Email Address:** the e-mail address you are configuring
3. **POP or IMAP:** most locations will offer both here. This is an important distinction, as POP will download the mail to your computer, deleting the mail from the server, whereas IMAP will work off of the server, see [subsection 4.1.4](#) for more details.

4.1.3 Mail & Newsgroup Account Settings

Mail Account Settings Once you have a mail account setup,

⁴see section [4.3](#) about starting the mail client

⁵You cannot use Mozilla to directly check web-only mail accounts like Yahoo! or Hotmail. However, there are some projects out there like YahooPOPs <http://yahoopops.sourceforge.net> that can be used to check these accounts from within Mozilla.

4.1.4 POP vs. IMAP

POP With POP, the so-called *Post Office Protocol*, your computer, or –more specifically– your mail client, opens a session with your mail server, downloads all your mail, closes the session and then allows you to read the mail which is locally stored.

Pro	Con
Do not need to be connected for the duration of reading e-mail	mail on workstation is the only copy

IMAP IMAP, or the *Internet Mail Access Protocol* is a more advanced protocol. With IMAP, the mail and data stays on the server. The client first downloads the header information (date, subject, sender, and so forth) and then downloads the message body when you request it.

Pro	Con
Faster initial access for mail	Must be online
Mail is stored on server	

4.1.5 SMTP, or, Outgoing Mail Settings

SMTP, or the *Simple Mail Transport Protocol*, is used to transfer the mail you compose⁶ to your recipient’s mail system. Basically, POP and IMAP in [subsection 4.1.4](#) are used to retrieve mail, and SMTP is used to send it.

Because of how SMTP is used and implemented today and limitations you may run into while using Mozilla (or any other mail client, for that matter), I am going to attempt a brief description of how it works. This could especially

⁶See section [4.6](#).

be useful if you use a laptop and send mail from multiple locations (office, home, friends' homes, airports, open wireless points, etc.)

Configuring SMTP The configuration screens for SMTP are located at *Edit—Mail & Newsgroup Account Settings*

4.2 Migrating Mail

4.2.1 Migrating Mail and Settings

Mozilla keeps its mail and mail settings in your Profile, discussed in [Appendix B](#). Based on the knowledge, you will see that the settings are kept in a completely arbitrary and random folder, the arbitrariness and randomness to make even Monty Python proud. As this is the case, you cannot simply copy the settings and mail files over from one profile to another, because the settings may reference `montypyt.slt` and you have moved them to `kidsnhall.slt`⁷

If you want to migrate your mail settings between different profiles (on the same or disparate machines) or perhaps you want to move to a different Mozilla-based e-mail application such as Thunderbird, follow these simple steps.

4.2.2 Thunderbird

Note: If you use a custom theme, it is best to set Mozilla to the default theme before performing the following procedure. If you fail to do this, Thunderbird

⁷hey, the generation of the profile “salt” directories is completely random, so it *could* happen!

may start up a bit strangely, due to incompatibilities between the theme you copy from your Mozilla profile to your Thunderbird profile. If this happens, go into *Tools—Options* and choose the *themes* settings page; uninstall the theme that is not working, and Thunderbird should revert to its original theme.

1. Use either the Profile Manger ([subsection 2.3.1](#)) or start up the new version of Thunderbird and let it create a default Thunderbird profile for you. When the Account Manager comes up click cancel and exit the application.
2. Find the Mozilla profile you are interested in migrating (...\\Application Data\\Mozilla\\Profiles\\XXXXXXXXX.slt). Find the location of your new default Thunderbird profile folder. Now copy all the contents of the first directory into the second including the mail folders and their indexes.
3. You aren't done yet because Mozilla uses absolute directory paths in prefs.js. Use a text editor ⁸ to open up the prefs.js file located in the Thunderbird directory. Search and replace all strings containing: ...\\Mozilla\\Profiles\\XXXX.slt with ...\\Thunderbird\\Profiles\\XXXX.slt.
4. Save the file and start up Thunderbird.

⁸If you are on windows, it is best to use something other than notepad. Notepad can insert unwanted characters in the prefs file, so make sure you save the file as 'all files' and 'ANSI'.

4.2.3 Migrating Mail from Another Client

4.3 Starting the Mail client

With Mozilla started, you can enter the mail portion in a number of ways. At the bottom of your client⁹ you can click on the little icon that looks like an envelope to start up the E-mail and News client. If you have an aversion to the component bar, you can start it from the “Window” menu. The shortcut is `ctrl+2`.

At this point, you will either be looking at your mail homepage, or you will be directed to setup your first account. Account setup is detailed in [subsection 4.1.2](#).

4.3.1 Layout

The mail window is laid out in three distinct window panes. Depending on what you chose in the setup portion¹⁰, you will have your folder pane on either the entire left-hand side (good for those of you who are anal about organizing your mail) or it will be relegated to the upper-left of the window (good if you like to maximize your reading space).

⁹this assumes you have not hidden the Component Bar, see [subsection 3.3.1](#)

¹⁰??

4.4 Reading Mail

4.4.1 Attachments

Attachments are additional file that are sent along with the e-mail message itself. Think of them as being like a Remora Fish that attaches itself to a shark, just riding along with the shark wherever it goes. Okay, maybe thinking about attachments that way is not totally productive, but it sure is fun!

In any case, attachments are widely used to send pictures of one's children, or, perhaps one's dog (usually whichever one is the more attractive) to friends and relatives that probably do not really want to see the picture and would rather have a nice letter instead. Well, these poor saps in your extended family are now at your mercy, since there is almost nothing they can do to stop you from sending them pictures of your new goldfish or audio clips of your new garage folk band as often as you please.

Tech Note: In Mozilla, when you send or receive an attachment, the attachment itself is stored in an encoded form in the actual file that holds all your mail. So, you should be judicious about the use of attachments as larger files means slower access time to your mail.

Reading Attachments: `Attach`

Sending Attachments:

4.5 Replying

To reply to the message you are reading, just hit the reply button on your toolbar or type `ctrl+R`. This will bring up a compose window with the recipient filled in, and the text of the original message quoted as per your settings in Preferences.¹¹

Tech Note: When replying, you can further customize the look of the quoted text. In your Chrome directory (located in *Path to mozilla chrome*, create a file called *userContent.css* with the following contents.

```
blockquote[type=cite] {
border-width: thin ! important;
font-family: comic sans ms ! important;
background-color: ivory !important;
font-size: 11pt ! important;
}
blockquote[type=cite] {
color: navy ! important;
}
blockquote[type=cite] blockquote {
color: maroon ! important;
}
blockquote[type=cite] blockquote blockquote {
color: green ! important;
}
blockquote[type=cite] blockquote blockquote blockquote {
color: purple ! important;
}
blockquote[type=cite] blockquote blockquote blockquote blockquote {
color:red1 ! important;
}
blockquote[type=cite] blockquote blockquote blockquote blockquote
blockquote {
color:orange ! important;
```

¹¹??

4.6 Composing Mail

Ready to impress that hot geeky guy who lives down the hall from you? Well, let's send him a little piece of mail from Mozilla. There are two formats for mail: plain text and HTML. Plain text is just that; content without a lot of fluff getting in the way of your deepest thoughts. HTML allows you to add formatting to your message so you can display your creative side as well as your intellectual one. If you are trying to impress the guy down the hall that knows more than just how to turn on his computer, I'd advise starting with plain text, and then inserting HTML in there later, when you really need to. Note that it is possible to do some limited formatting in plain text, and we'll cover that in the plain text section.

4.6.1 Plain Text E-mail

There's not too much to composing messages in plain text, so in this section, we're going to cover the few plain text attributes, as well as the basics of composing a message. In [subsection 4.6.2](#), we'll look at the things you can do with HTML in your messages.

There are a few settings that affect plain text mail. In *Edit—Preferences—Mail & Newsgroups—Composition*, there is a setting to wrap your messages at a certain length. This is to insure that the recipient sees the mail in an easy to read fashion, and that all the lines are not of different length, or that your paragraph is on one long line and the reader has to scroll horizontally rather than vertically. This is a good setting, and you should choose anything between 72 to 76 characters in length to have mozilla wrap your text. This is a global

setting and will take effect for all messages you compose in *plain text*

Next, an important setting to remember is the composition format. If you solely or almost always compose mail in plain text, you will want to leave the setting *Compose messages in HTML format* located in *Edit—Mail & Newsgroup Account Settings—jaccount namej* blank. This is a per-account setting, and needs to be configured the way you want it for each account. The default is for messages to be composed in HTML format.

Starting a Message To compose mail, click either the toolbar button “Compose Mail,” the menu option *Message—New Message*, or using the `ctrl + m` hotkey. This will bring up a new window for you to compose e-mail.

Tech Note: The Mail Composer is the same code that Composer in [Chapter 6](#) runs on, so they have the same feel to them.

The first thing you need to do is address it.

Addressing and Body

Sending

Formatting Plain Text Mail

4.6.2 HTML E-mail

E-mail has been around for a long time, but about 2 seconds after HTML was introduced to the world, someone created an e-mail client that could handle

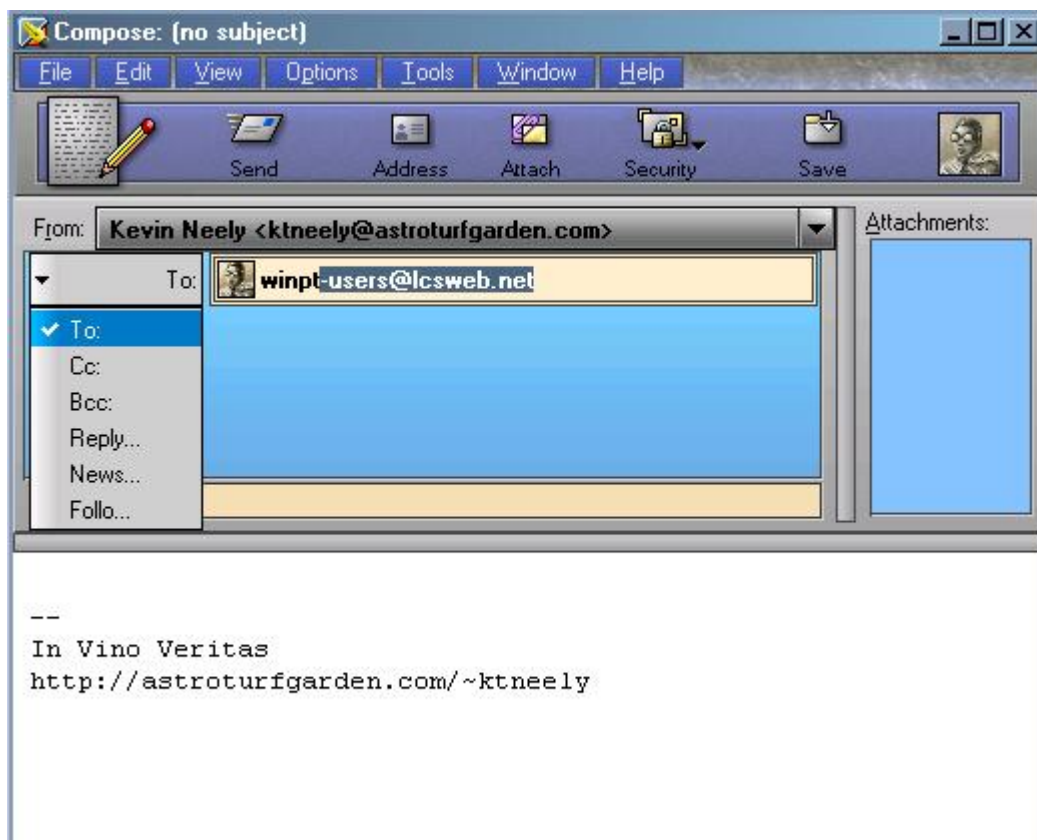


Figure 4.1: Composing New Mail

viewing and sending HTML formatted e-mail. Well, maybe it was a bit longer than that, but HTML formatted e-mail can be used in just about every GUI-based e-mail client out there, Mozilla included.

Just under *Edit—Preferences—Mail & Newsgroups—Composition*, there is a preference called *Send Format*. I know you won't believe me when I tell you, but this actually has to do with how your messages are sent to people. In here, you can choose what to do when Mozilla knows that a recipient should not receive HTML mail.¹² The bottom section allows you to specify entire domains that should either received HTML formatted e-mail or plain text formatted e-mail. These settings only take effect if you are composing HTML formatted messages. If you are composing in plain text, it will send in plain text, no matter what these settings are. However, if you usually send in plain text but want to compose a particular e-mail in HTML, you can hold down the shift key when you click on compose or reply, and that will place the composer window in HTML format.

4.7 Using Templates

Templates, as in other programs, allow you to create pre-made documents so you can easily and quickly compose messages which follow a similar pattern to ones you have sent and will send again.

For example, let us say your boss wants you to send him a TPC report once per week and that it basically says the same thing each week. Normally, you just forward the message you sent the week before, making a minor edit here

¹²As described in ??

or there. Unfortunately, a couple times you forgot to get rid of the ‘Fwd:’ in the subject line, or the dashed line which demarcates the forwarded message. Well, by using templates, you will never need to face this problem again.

Setting up the Templates There should be a folder named (surprisingly enough) ‘Templates’ nestled among the other folders. Mozilla should recognize it as a special folder with distinct properties and it tells you this

4.8 Working Offline

If you are a road warrior, have dial-up internet access, like to take long walks and check your mail in the park, or just a pack-rat at heart, you are going to want to have your mail available when your computer is not connected to the internet. If you chose to use POP when setting up your mail client in [section 4.1](#), then you are pretty much all setup. Just read the next paragraph, and you are all set. If you chose IMAP and want to have your mail offline, the entire section is for you!

Basics or, “What is ‘Offline’ and why would I want to use it?”

To move to offline mode in mail and news is the same as getting there in the web browser. See [section 3.10](#)

Note: There is no way to take just one component offline, so when any one piece of Mozilla goes offline, the entire application assumes that it cannot reach the internet or local network. You can tell at a glance whether or not you are offline by checking the status of the online status icon in the lower right hand

corner, as in [Figure 3.1](#)

However, if you

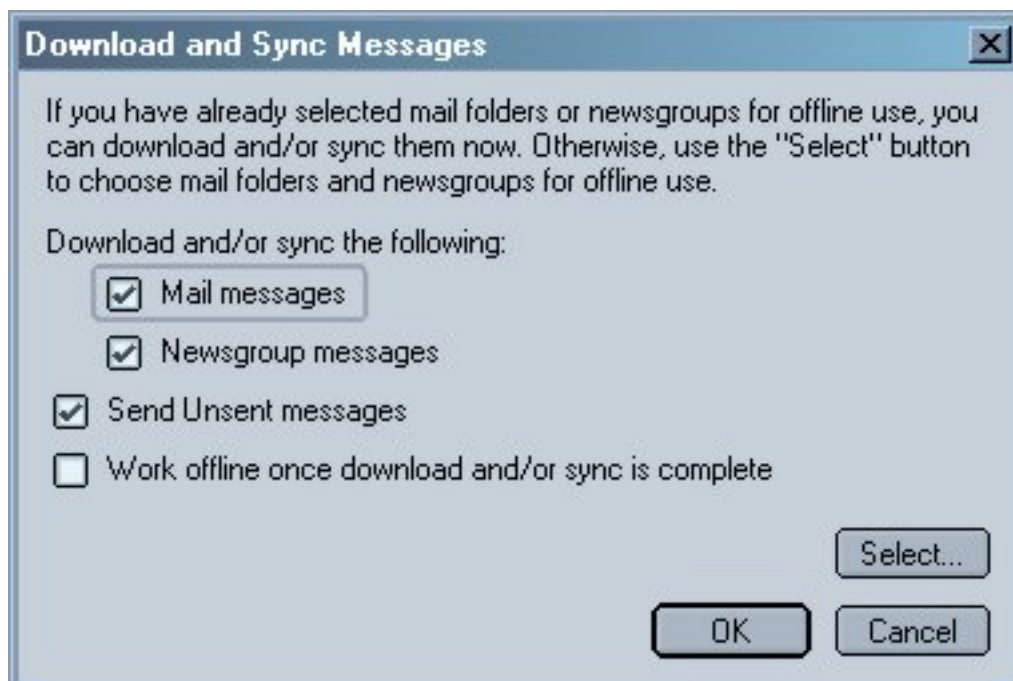


Figure 4.2: Download and Synchronize Mail and News

4.9 News Client

E-mail's not the only thing this bad-boy can do; the client can connect to and read USENET messages via the NNTP protocol. “Woah!” you say, “what the hell is that?” Well, before Google.com, yea, even before the World Wide Web.

4.9.1 News Account Settings

News accounts are very similar to e-mail accounts. Basically, a newsgroup is like a big, shared mailbox that concerns a common topic. Nearly all institutions of learning and most ISPs, you very likely have some sort of newsgroup account, whether you know it or not. These newsgroups run over NNTP, or, the *Network News Transfer Protocol*.

Even if your ISP does not provide you with newsgroups, there are public ones available out there. There are at least two such public services for Mozilla itself. One is for users and the other is for developers. In actuality, however, both provide good help and tips for your average Joe Schmoe users like you and me. I am going to guide you through connecting to the Mozilla news service, and then you'll be ready to apply this knowledge to connecting to your own news service, so you can read newsgroups like `alt.gi-joe` and `alt.sex.fetish.plushies`, since you are curious why your boyfriend has such a strange attachment to that kangaroo his mother gave him for Valentine's Day when he was 14.

Connecting to Mozilla News First, start up the mail and news client, as in [section 4.3](#).

1. From the menu, choose *Edit—Mail&Newsgroup Account Settings*.
2. With the settings screen up, click on *Add Account*.
3. Choose “Newsgroup Account” and click *Next*.
4. Enter your name and primary e-mail address¹³ and click *Next*.

¹³many people put a bogus e-mail address here to help ward off spammers. A popular technique is to use

5. The news server in this instance should be `news.mozilla.org`.
6. Accept the default account or make it more aesthetically pleasing. and click *Next*.
7. Verify your settings and click *Finish*.

Wasn't that easy? Now you are all setup to read messages in the mozilla newsgroup. Let's continue, shall we?

4.9.2 Reading Newsgroup Messages

Subscribing to Newsgroups Now that we have the news account setup, it's time to take a look at the knowledge (or egregious bluster) contained within. First, we need to subscribe¹⁴ to one or more groups.

You can get to the subscribe dialogues by either choosing *File—Subscribe* as in **Figure 4.3** or by right-clicking on your news account entry and selecting *Subscribe* from the pop-up menu. From this box, you can “subscribe” to any folder or group from any of your configured accounts, so you need to make sure you are looking at the correct one, See **Figure 4.4** The first time you do this, you are going to need to download the names of all the newsgroups. Get some popcorn, as this can be over 20,000 different groups if you are contacting a your real e-mail address so people can find you, but to add words in the middle of it to fool the programs that farm e-mail addresses. For example, if your e-mail is `superkitten@yahoo.com`, you might change it to `DONT.SPAM.superkitten@yahoo.com` so that a human would know to remove the words, but a robot would not.

¹⁴You may be familiar with subscribing to mailing lists, but this is not the same thing. *Subscribing* to newsgroups is really just a way of easily getting to the groups in which you are interested. It would be better to think of it as creating shortcuts or a bookmark list of groups you frequent.

new ISP news server. (You never knew there was so much time wasted on the internet, did you?) From here, you need only click on the box to the right of a group to check it. Now you are subscribed to the newsgroup.

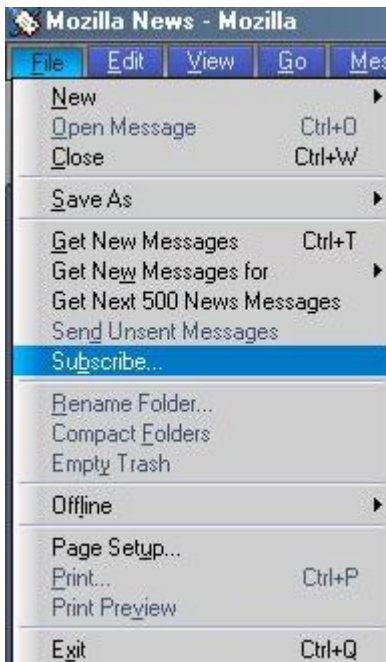


Figure 4.3: Subscribe Menu Option

Downloading Headers Now that we have some newsgroups listed in our folder pane, let's see what content is available therein. In your folder pane on the left, you should see a listing of the groups to which you have subscribed under the name of the newsgroup account. When you click on one of these groups, Mozilla will ask the server how many active messages there are in the group. If it is more than specified in the *Server Settings* portion, then it will ask you how many headers you want to get. (See [Figure 4.5](#) Notice, in the example that the group

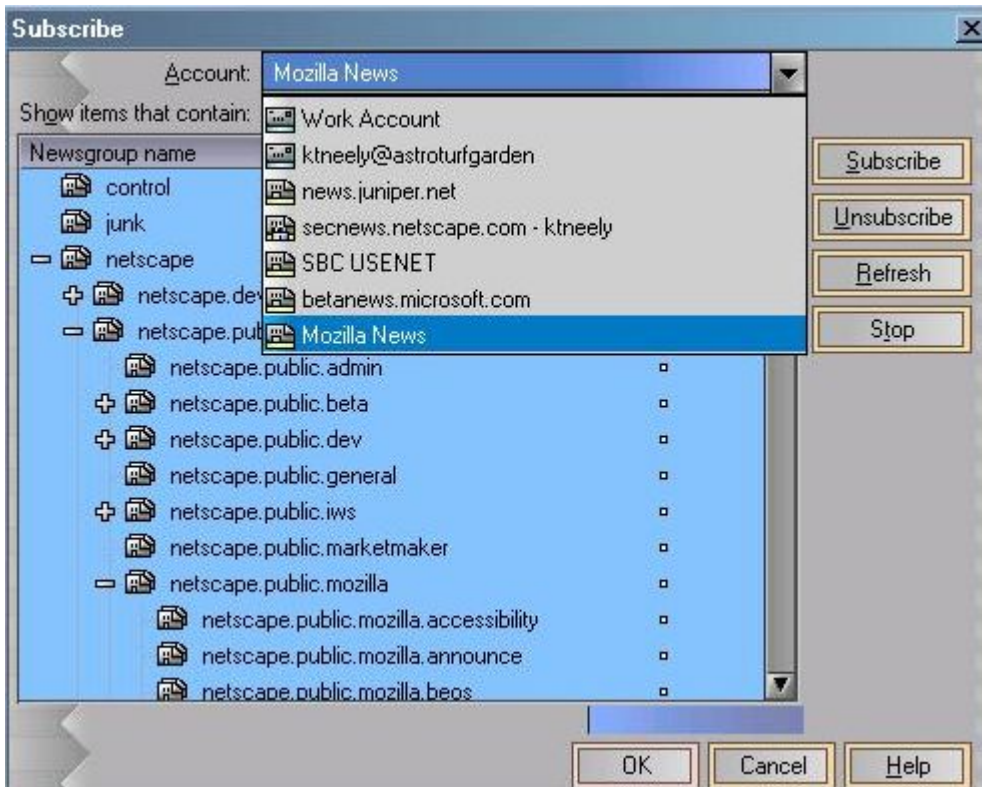


Figure 4.4: Folder Subscribe Box



Figure 4.5: Downloading News Headers

contains over 3000 postings, but I have opted for the default of 500 so I am not waiting forever to retrieve message headers I will probably never read. By specifying a limited number headers, Mozilla will go and get the most recent postings on the group.

In a few seconds (or longer, if the server is tired or your connection is running at turtle speed), you should see the newsgroup headers in your right-hand pane. Like IMAP¹⁵, the message body will be retrieved when you click on its subject line.

If using a View¹⁶, the messages will not appear threaded. At this time, you will need to be viewing *all* messages for threading to work. If the messages are not threaded, and you are not using a view, click on the Thread Select icon in the upper left-hand corner of the header pane. See [Figure 4.6](#) for the location. It's just above the big red dot.

After you have selected the threaded view, your messages should look some-

¹⁵[4.1.4](#)

¹⁶see [section 4.10](#)

☰	Date	Sender	Subject	☑		
●	12/20/2002 ...	Jay Garcia	Re: X-No-Archive	☑		
	12/20/2002 ...	Andrew Perry	Re: Question About Junk Mail Fil...	☑		
	12/20/2002 ...	Andrew Perry	Re: Spam Filter 1.3b	☑		
	12/20/2002 ...	Jay Garcia	Re: IMAP and passwords	☑		
	12/21/2002 ...	Georges Hein...	news user/password	☑		
	12/21/2002 ...	Steve	Re: Spam Filter 1.3b	☑		
	12/21/2002 ...	Ron Hunter	Re: Question About Junk Mail Fil...	☑		
	12/21/2002 ...	Sailfish	Re: Question About Junk Mail Fil...	☑		
	12/21/2002 ...	sek@vitusber...	Re: IMAP and passwords	☑		
	12/21/2002 ...	Lars Rohleder	Re: IMAP and passwords	☑		
	12/21/2002 ...	Paolo R	Mozilla mail/news crashes starti...	☑		

Figure 4.6: Selecting threaded news messages

thing like [Figure 4.7](#). Notice “How to stop automatic filecompression” by Gerhard Silbermann has been expanded, and there is a tree-like (not to say the discussion was wooden) view of the follow-up messages.

This threaded view is quite helpful, especially when coming to a newsgroup for the first time.

Reading Messages Now, if you have the preview pane opened, a simple click on any one of these exciting messages will bring up the message text. Once you select a message for reading, Mozilla will contact the news server and attempt to retrieve the message. This should take only a couple seconds, even if you are using a dial-up connection.

Tech Note: Newsgroup clients use a special file to keep track of the messages you have read. In older (and especially UNIX-based clients) they use a hidden

Date	Sender	Subject	
12/19/2002 ...	sek@vitusber...	IMAP and passwords	<input checked="" type="checkbox"/>
12/19/2002 ...	Jonathan Arn...	MozTweak Signature	<input checked="" type="checkbox"/>
12/19/2002 ...	Tim Schoenfe...	Any chance of case-insensitive ...	<input checked="" type="checkbox"/>
12/19/2002 ...	Dries Van Dyck	Performance of search in adres...	<input checked="" type="checkbox"/>
12/19/2002 ...	Gerhard Silbe...	How to stop automatic filecompr...	<input checked="" type="checkbox"/>
12/19/2002 ...	Bill C	Re: How to stop automatic fil...	<input checked="" type="checkbox"/>
12/19/2002 ...	Gerhard Silbe...	Re: How to stop automatic...	<input checked="" type="checkbox"/>
12/20/2002 ...	Len	Re: How to stop automatic...	<input checked="" type="checkbox"/>
12/19/2002 ...	lesage	search options are too limited in ...	<input checked="" type="checkbox"/>
12/19/2002 ...	tom acito	combine and decode function fo...	<input checked="" type="checkbox"/>
12/19/2002 ...	Minh	Full Access to LDAP address bo...	<input checked="" type="checkbox"/>

Figure 4.7: Threaded news messages

file called `.newsrsc`. SLRN uses a similar file called `.slrnrc`. Mozilla uses an `rc` file per newsgroup account. You will find it in the News subdirectory of your profile, and it will be called `servername.rc`. For example, if you have configured Mozilla to talk to the general user newsgroups, you will find a file called `sec-news.netscape.com.rc`.

Therein, you might discover a line like the following:

```
netscape.mozilla.user.win32: 1-13372,14582,14774-14779
```

which shows that you have marked the first 13372 messages as read, and then a few others after that. Everything else in that newsgroup would appear as unread when you next you view it.

4.10 Views

Do not skip over this section lightly!! Message views are one of the most powerful and underused tools in any e-mail client, Mozilla included.

Hopefully, I've got your attention now. Well, the fact is that most people simply read their mail as it comes in. One may create a few folders to store mail special to them (auto-responses from one's Congressional representatives, perhaps) With views, however, you can filter the messages in the current folder to a subset of what is contained therein.

4.11 Rules and Filters

Your rules, stored in the `rules.dat` file in your profile, are used to automate organization of your mail.

4.12 Security

Disable receiving HTML messages:

Disable Images in e-mail: Since Mozilla 1.3, it is possible to disallow e-mail to load external images. This is handy because a common trick that nasty ole spammers use to find you is to send you an empty e-mail with a link to an image on their server. When you open the mail, the HTML-enabled mail client goes out and grabs the image (which is usually so small that you do not even see it), which then lets the spammer know that you have received the e-mail and opened it, even if all you did was click the delete key!

To disable loading *remote* images, change the following setting: *Edit—Preferences...—Privacy & Security—Images—Do not load remote images in Mail & Newsgroup messages.*

By disabling the loading of remote images, you can still view HTML-formatted e-mail, and even HTML-formatted e-mail that has an image embedded in it, but this little spammer trick will no longer work. Unfortunately, some legitimate e-mail uses this method. Someone might send you a message like this with a link to an external image to cut down on the size of the e-mail he sends. Or, you might get your daily comics from somewhere like <http://ucomics.com> which uses this method to display the image.

Only you can decide whether or not these features are something you want to use.

4.13 Junk Mail Controls

With the release of Mozilla 1.3, the mail client in Mozilla has a built-in junk mail filter. This filter dynamically “learns” which mail is junk and which is valid based on user input. When you first start using Mozilla Mail, it is like a baby that doesn’t know what types of food it likes, and has no idea what mail is valid and what is spam. You, the parent, can train this little bouncing baby by spoon-feeding it spam, and telling it where to spit the junk mail.

At the far right of your header pane, there is a column with a strange-looking trash icon. When Mozilla is young and does not know anything about your mail, this trash icon has a question mark on it, as in **Figure 4.6**. Clicking on the trash icon once or highlighting the message and clicking on your junk

button on the toolbar will change this icon to a trashcan or junk bin, which denotes that this mail is junk. Clicking again will clear the icon, denoting that the message is valid and one that you expect or want to receive.

4.13.1 Setting up Junk Mail

Before Mozilla will filter your junk mail for you, they need to be enabled to run. Note that you need to set them up for each account you have configured and want Mozilla to filter for spam. Open up the options screen from the *Tools—Junk Mail Controls...* menu item, and you will see a screen like in **Figure 4.8**.

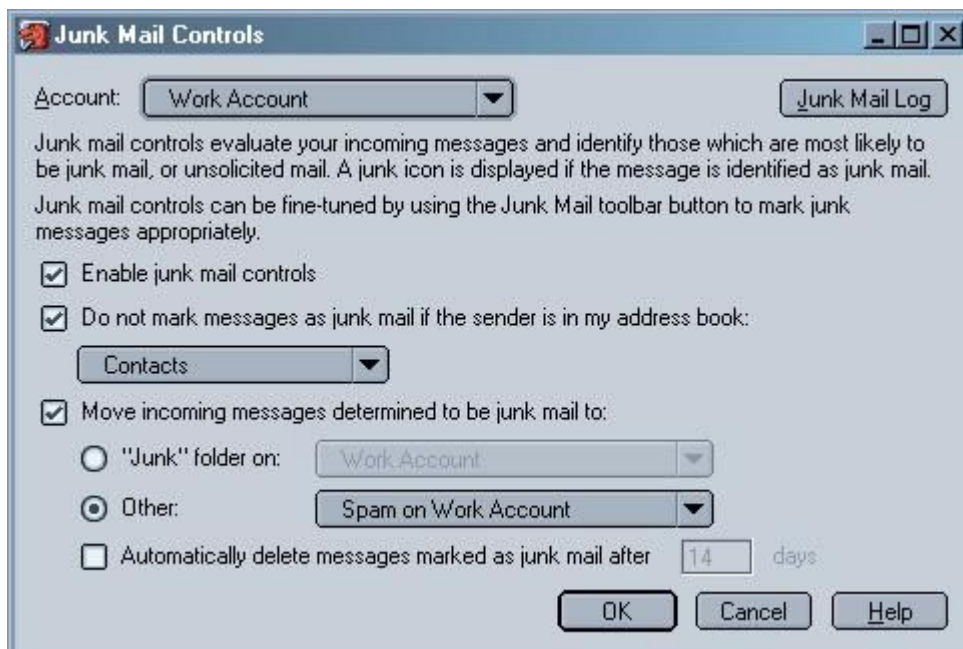


Figure 4.8: Junk Mail Controls Settings Screen

Junk Mail Controls Settings Screen: The setup screen is pretty self-explanatory. Make sure to choose the account you want to configure in the upper left, and

then check “Enable junk mail controls.” Assuming you do not have spammers and junk mail senders in your address book, you can automatically *whitelist* those people by checking the next box, “Do not mark messages...” and then choose the address book you want Mozilla to look at. This setting will allow all mail from senders whose e-mail addresses are in the chosen addressbook, no matter how *spammy* the message looks.

The next two checkboxes control what Mozilla does with mail it determines to be Junk. The first configures in which folder Mozilla should place mail it determines to be junk. By default, Mozilla will create a special folder called *Junk* when junk mail is first configured to run, and the default is to place it there. If you are already putting junk mail somewhere else, you may want to point Mozilla to that folder. The next and final option is to have Mozilla automatically delete messages after they have been around for a while. This is a good idea, as it will minimize the used disk space on the server and your workstation, if you use IMAP, or just your workstation if you use POP.

Junk Mail Controls Logging: On the upper right of the Junk Mail Controls settings, there is a button to configure the logging. This isn’t really necessary, but can be interesting to look at, or for reference if you think Mozilla is mis-identifying good mail as spam, and you have set it to automatically delete. **Figure 4.9** is an example of the log file. The log file is saved in an HTML-formatted file called *junklog.html* in each accounts’ folder under your profile. See **section 2.6** for more information about the profile directory and its contents.



Figure 4.9: Junk Mail Log Settings Screen

4.13.2 Training Mozilla

assuming you have quite a bit of mail in your inbox but are just starting to use Mozilla, here are some steps to quickly train the mail client to identify spam.

1. Highlight any spam and junk mail you have in your Inbox. Use the ctrl key and the mouse to highlight all the junk messages at once.
2. Click on the Junk button on the toolbar to tell Mozilla that they are junk.
3. Select *Tools—Run Junk Mail Controls on Selected Messages...* from the menu.
4. Delete the messages or move them to your Junk folder

5. Now, in your Inbox, type `ctrl-a` to select all the messages
6. Mark the messages as not Junk
7. Select *Tools—Run Junk Mail Controls on Selected Messages...* from the menu.

If you are working against a mailbox that does not currently have any junk mail or spam in it, then simply skip the first couple steps, select a message and hit `ctrl-a` to select all the messages, mark them as not spam, and then run junk mail controls. When you “train” Mozilla, the application keeps a record of what you have done in a file called *training.dat* which is stored in the root of your profile directory, and is used for *all* your e-mail accounts, so you should not have to train each individually.

4.14 Advanced Mail and News Settings

Sometimes there are things you just cannot find in either the General Preferences or the Mail and News Account Settings.

4.14.1 Advanced Appearance Settings

Example 1: Changing the Display Colour of Quoted Text This example will show you how to use the `userContent.css` file as described in ?? to highlight quoted replies. The idea is to very obviously differentiate between different authors’ comments when reading a long and heavily replied-to e-mail or newsgroup message. You will see that the attribute we are modifying is the `blockquote[type=cite]` attribute which is the name of the quoted text when you reply to an e-mail or newsgroup message.

```
blockquote[type=cite] {
border-width: thin ! important;
#font-family: comic sans ms ! important;
font-family: times new roman;
#background-color: ivory !important;
font-size: 11pt ! important;
}
blockquote[type=cite] {
color: navy ! important;
}
blockquote[type=cite] blockquote {
color: maroon ! important;
}
blockquote[type=cite] blockquote blockquote {
color: green ! important;
}
```

First we define the general attributes for all the quoted text. Then, we define the color of the first citation to be navy. Then, if we are quoting someone who quoted someone else (or is replying to us) we then make that a different color: maroon. If there are further levels, you can continue to add additional entries with more instances of `blockquote` in them, choosing a different color each time.

Example 2: Changing the Appearance of the Thread Pane

```
treechildren:-moz-tree-cell-text(news) {
    color: red !important;
```

```
font-weight: bold !important;
font-style: italic !important;
font-family: courier !important;
}
```

Example 3: Changing the Reply Header When you reply to a mail or news message and quote the original text, the text is preceded by a header that signifies the original author. This text can be customized to make your own mail a bit more unique. Because, really, how can one be truly original if one's e-mail looks just like everyone else's? And, while we're at it, we may as well compliment the other person while replying to them. Try putting the following two statements into your `prefs.js`

```
'mailnews.reply_header_authorwrote', 'The eloquent %s wrote');
'user_pref(mainnews.reply_header_colon', '...');
```

The `%s` is a variable for sender, and is replaced by the name of the person to whom you are replying. Thus, if you have made these changes and restarted Mozilla, responding to Sally Mae will look like this:

The eloquent Sally Mae wrote...

instead of

Sally Mae wrote:

Now, isn't that much, much nicer? I'll leave it up to you to come up with your own witty reply header.

Example 4: Changing the Date Format To change the date format, you want to look at the following settings in your `prefs.js` file or by using `about:config`.

```
user_pref("mail.ui.display.dateformat.default", 2);  
user_pref("mail.ui.display.dateformat.thisweek", 4);  
user_pref("mail.ui.display.dateformat.today", 0);
```

Look at this: [http://lxr.mozilla.org/mozilla/source/intl/locale/idl/nsIScriptableDateForma
idl\hyper@hash45](http://lxr.mozilla.org/mozilla/source/intl/locale/idl/nsIScriptableDateForma
idl\hyper@hash45)

4.14.2 Mail

Using an External Mail Client Perhaps you want to use Mozilla but do not want to use it as your default mail client in Windows-based Operating Systems. If you would like to do this, well, I guess there's no accounting for taste, so all we need to do is put the following statement in our `prefs.js` file:

```
user_pref("network.protocol-handler.external.mailto", true);
```

4.14.3 News

4.15 Troubleshooting

4.15.1 Messages Not Sending

4.15.2 Mail Files are too Large

See the and the **item 11** for compaction

Chapter 5

Address Book

Address converter: <http://www.joshie.com/projects/dawn/features.html>

Chapter 6

Composer

The Third main element of Mozilla is the Composer. This tool is used primarily to create web pages for publishing on the internet. This tool provides a WYSIWIG (What You See Is What You Get) interface for creating documents so that you do not need to know HTML to create simple documents for publishing on the web. If you are familiar with HTML, you can place Composer into Source mode so you can see and create the source manually. Additionally, composer is invoked each time you compose an e-mail message, so don't be surprised if composing e-mail with HTML formatting looks very similar to creating web pages.

Chapter 7

ChatZilla

Chapter 8

Security

Chapter 9

JabberZilla

This may be in a section, not sure yet

Chapter 10

Under the Hood

This chapter, just a placeholder for now, will attempt to describe a little bit more about the mechanics and underlying technologies for Mozilla. Still not really for the super-technically minded, it will mostly help to explain things that are referenced or alluded to in the previous sections of the book.

(Content will likely be all over the place and change with every release)

10.1 UserContent.css

: Allows for customization of Mozilla's appearance in output windows (i.e. what is displayed by browser, mail, etc.)

Appendix A

A Sample user.js file

```
////////////////////////////////////  
// Turning off annoyances  
////////////////////////////////////  
  
// Image animation mode: normal, once, none.  
// user_pref("image.animation_mode", "once");  
  
// Show pref UI to block images that don't come from the current server  
// user_pref("imageblocker.enable", true);  
  
// Turn that annoying autocomplete popup REALLY off:  
// (This actually has a UI but it's buried.)  
// user_pref("browser.urlbar.autocomplete.enabled", false);  
// user_pref("browser.urlbar.showPopup", false);  
user_pref("browser.urlbar.showSearch", false);
```

APPENDIX A. A SAMPLE USER.JS FILE

```
////////////////////////////////////
// UI look-and-feel issues
////////////////////////////////////

// Don't ever show me a font smaller than this
user_pref("font.minimum-size.x-western", 12);

// Set the submenu delay
user_pref("ui.submenuDelay", 300);

// Set select background for text widgets:
user_pref("ui.textSelectBackground", "midnightblue");

////////////////////////////////////
// Control of popup windows
////////////////////////////////////

// Use configurable security policies to override popups, see
// http://www.mozilla.org/projects/security/components/configPolicy.html

// Turn window.open off for particular sites:
// user_pref("capability.policy.popupsites.sites", "http://www.annoyingsite1.com http://www.annoyingsite2.com");
// user_pref("capability.policy.popupsites.Window.open", "noAccess");
```


APPENDIX A. A SAMPLE USER.JS FILE

```
// Or turn it off everywhere:
// user_pref("capability.policy.default.Window.open","noAccess");

// More important, disable JS windows popping up a new window on load
// (as lots of porn and spam sites do):
user_pref("dom.disable_open_during_load", true);

// Override popping up new windows on target// Use configurable security policies to override
// http://www.mozilla.org/projects/security/components/configPolicy.html

// Turn window.open off for particular sites:
// user_pref("capability.policy.popupsites.sites", "http://www.annoyingsite1.com http://www
// user_pref("capability.policy.popupsites.Window.open","noAccess");

// Or turn it off everywhere:
// user_pref("capability.policy.default.Window.open","noAccess");

// More important, disable JS windows popping up a new window on load
// (as lots of porn and spam sites do):
user_pref("dom.disable_open_during_load", true);

// Override popping up new windows on target=anything
// user_pref("browser.target_new_blocked", true);
```

APPENDIX A. A SAMPLE USER.JS FILE

```
////////////////////////////////////  
// Miscellaneous stuff  
////////////////////////////////////  
  
// Turn on gathering of favicon.ico icons  
user_pref("browser.chrome.favicons",true);
```

Appendix B

Default Directory Profile Locations

Windows 95/98/ME No Logon:

C:\Windows\Application Data\Mozilla\Profiles\default\xxxxxxx.slt¹

Windows 95/98/Me Family with Logon:

C:\Windows\Profiles\PROFILE_NAME\Application Data\Mozilla\Profiles\default\xxxxxxx.slt\

Windows NT 4.0:

C:\Winnt\Profiles\NT-User\Application Data\Mozilla\Profiles\default\xxxxxxx.slt\

Windows 2000/XP:

C:\Documents and Settings\User\Application Data\Mozilla\Profiles\default\xxxxxxx.slt²

Linux:

~/Mozilla/xxxxxxx.slt/

¹where xxxxxxx is a random alpha-numeric string

²In Windows 2000/XP, "Application Data" is a hidden system folder, that means, it's hidden "twice", make sure you enabled both viewing hidden and system-protected files and folders, otherwise you will not be able to see it.

APPENDIX B. DEFAULT DIRECTORY PROFILE LOCATIONS

Mac OS 9:

Documents:Mozilla:User:xxxxxxx.slt:

Mac OS X:

~/Library/Application\ Support/org.mozilla.Mozilla/Profiles/profile name/xxxxxxx.slt/

The following table lists items stored in the profile directory as well as the file's function.

APPENDIX B. DEFAULT DIRECTORY PROFILE LOCATIONS

12345678.s	Password file, random 8-digit string.
12345678.w	saved forms entries.
abook.mab	address book
bookmarks.html	Bookmarks. Compatible with NC 4 (rename to bookmark.htm)
cert7.db	certificate file
cookies.txt	stores cookies. Compatible with NC 4.
custom.dic	customized dictionary.
downloads.rdf	download manager data (Mozilla 0.99+)
history.dat	History
histoy.mab	Collected Addresses address book.
localstore.rdf	Cache for the interface (layout and so forth)
mimetypes.rdf	stores information about MIME types.
panacea.dat	Cache for the mail folders (structure, UI)
panels.rdf	stores which panels are available in the sidebar
search.rdf	stores Search configuration
secmod.db	Security module
prefs.js	main configuration file
URL.tbl	stores site info where no forms data should be saved.
user.js	configuration file, supersedes all entries in prefs.js
XUL.mfl	XUL (user interface) cache
\Cache\	Cache folder
\NewCache\	old Netscape 6.1 Cache folder
\chrome\	customization files ³
\ImapMail\	IMAP Mail folders
\Mail\	POP3 mail folders
\News\	News server folder

93
Table B.1: Profile Directory Contents

APPENDIX B. DEFAULT DIRECTORY PROFILE LOCATIONS

Appendix C

Command-line Options

The following table of options can be used to start Mozilla in a specific way. Perhaps in *Preferences—Appearance* you have it set to always start with your mail client, but you want to setup a shortcut to start with the Composer so you can quickly edit your homepage. With the command-line options, you can specify exactly how you want to start Mozilla for a specific instance.

To use the command-line options, you need to open up a command prompt (a DOS prompt in windows, an X-terminal or equivalent in UNIX) and navigate to where the mozilla executable is. Then, simply enter the executable with the command option.

For example:

```
C:\ mozilla -mail
```

to start the the Mozilla Mail application in Windows, or

```
$/mozilla -ProfileManager
```

to start the Mozilla ProfileManager and select a specific Profile in a UNIX environment.

Obviously, you do not type in the C:\ or the \$

APPENDIX C. COMMAND-LINE OPTIONS

Command Line Option	Value
-height <value>	Set height of startup window to <value>
-h or -help	Prints this list
-installer	Start with 4.x migration window
-width <value>	Set width of startup window to <value>
-v or -version	Print netscp.exe version
-CreateProfile <profile>	Create <profile>
-P <profile>	Start with <profile>
-ProfileWizard	Start with profile wizard
-ProfileManager	Start with profile manager
-SelectProfile	Start with profile selection dialog
-UILocale <locale>	Start with <locale> resources as UI Locale
-contentLocale <locale>	Start with <locale> resources as content Locale
-console	Start Mozilla with a debugging console
-nosplash	Disable splash screen
-quiet	Disable splash screen
-addressbook	Start with the addressbook
-mail	Start with mail
-news	Start with news
-aim	Start with Instant Messenger
-edit <url>	Start with editor
-compose <url>	Start with messenger compose
-jsconsole	Start with Javascript Console
-chrome <url>	Load the specified chrome
-calendar	Starts the Calendar ¹

Table C.1: Command Line Options

Appendix D

Resources

This is a listing of some external resources to help you when you are in trouble, or just to keep up with what's going on in the Mozilla Community.

Mozilla.org's list of Community Sites

<http://www.mozilla.org/community>

Mozilla Tips: A frequently updated source for tips on using Mozilla-based products

<http://www.mozillatips.com>

Index

- L^AT_EX**, [10](#)
- address book, [61](#)
- advanced settings, [22](#)
- bookmarks, [27](#)
 - importing, [28](#)
 - properties, [28](#)
- browser
 - preferences, [27](#)
- browser
 - offline, [29](#)
 - preferences
 - advanced, [30](#)
- camino, [7](#)
- chimera, [7](#)
- command line options, [79](#)
- installation, [13](#)
 - installer, [14](#)
 - linux, [15](#)
 - windows, [14](#)
 - manual, [15](#)
 - multiple versions, [19](#)
- k-meleon, [7](#)
- linux
 - installing under, [19](#)
- mail
 - account setup, [34](#)
 - addressing, [40](#)
 - attachments
 - reading, [37](#)
 - body, [40](#)
 - composing, [38](#)
 - HTML mail, [41](#)
 - plain text, [39](#)
 - composition, [32](#)
 - disk space, [34](#)
 - download, [42](#)
 - IMAP, [35](#), [36](#)
 - junk, [52](#), [53](#)

- log, 54
- options, 52
- training, 55
- training.dat, 55
- layout, 37
- migrating mail, 36
- non-Mozilla mail client, 58
- notification, 32
- offline, 30, 33, 41
- plain text, 39
 - formatting, 40
- POP, 35
- preferences, 32
- reading, 37
- reply header, 57
- replying, 37
- rules, 50
- sending, 40
- settings, 35
 - advanced, 58
- setup, 31
- spam, 52
- starting, 36
- sync, 42
- thread pane
 - customize, 57
 - views, 50
 - windows, 32
- mail and news
 - file locations, 18
- mozilla
 - backup, 16
 - exiting, 21
 - installing, 13
 - offline, 29, 30
 - start options, 79
 - starting, 21
 - uninstall, 17
 - upgrading, 17
 - versions, 13
- mozilla.org
 - newsgroups, 44
- navigator
 - offline, 29
- netscape, 7
- news, 42
 - download, 42
 - headers, 46
 - reading, 45
 - reading messages, 49

- settings, 44
 - subscribing, 45, 46
 - sync, 42
 - threading, 48
 - views, 50
- outlook express, 30
- phoenix, 7
- preferences, 22
 - mail and news, 35
- profile, 22, 75
- profiles, 25
- quicklaunch, 15, 21
- settings
 - mail, 35
 - news, 44
 - prefs.js, 23
 - user.js, 23
- seurity, 25
- spam, 52
- themes, 25
- training.dat, 55
- uninstall mozilla, 17
- upgrading mozilla, 17
- userContent.css, 24, 56
- windows
 - installing under, 19
- XUL, 24
- YahooPOPs, 34